

20. SILENT NIGHT

F. Gruber (1818)

$\text{♩} = 88$

I

1. Si - lent night! Ho - ly night! All is calm,
 2. Si - lent night! Ho - ly night! Shep - herds quake
 3. Si - lent night! Ho - ly night! Son of God,

II

Harp

I

5

All is bright, Round yon vir - gin Mo - ther and Child
 at the sight, Glo - ries stream - from hea - ven a - far
 Love's pure light, Ra - diance streams - from Thy ho - ly face

II

Harp

5

19. WASSAIL SONG



1. - Here we come a - car - ol - ing a - mong the leaves so green; -
 2. - We are not the dai - ly beggars that go from door to door; - But
 3. God bless the Mas - ter of this house, like - wise the Mis - tress too; - And



Here we come a - wand' - ring so fair - to be seen. Love and joy come to
 we are neigh - bor's chil - dren that you have seen be - fore.
 all the lit - tle chil - dren that round the ta - ble go.



you, and to you good Christ - mas too, And God bless you and send - you a



hap - py New year, and God send you a hap - py New year.

20. SILENT NIGHT



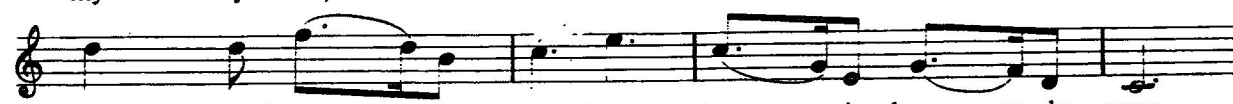
1. Si - lent night!	Ho - ly night!	All is calm,
2. Si - lent night!	Ho - ly night!	Shep - herds quake
3. Si - lent night!	Ho - ly night!	Son of God,



all is bright	Round yon Vir - gin
at the sight.	Glo - ries stream - from
Love's pure light.	Ra - diance streams from



Mo - ther and Child	Ho - ly In - fant so ten - der and mild
hea - ven a - far,	Hea - venly hosts - - sing al - le - lu - ia;
thy Ho - ly face,	With the dawn of re - dee - ming grace.



Sleep in heav - en - ly peace -	sleep - in heav - en - ly peace.
Christ the Sa - vior is born -	Christ - the Sa - vior is born.
Je - sus Lord at Thy birth -	Je - sus Lord at Thy birth.

(19) WASSAIL SONG

♩ = 88

Refrain
♩ = V

The musical score for 'WASSAIL SONG' consists of five staves. The first staff begins with a treble clef, a key signature of two flats (B-flat and E-flat), and a 6/8 time signature. A tempo marking of a quarter note equal to 88 is present. The melody is written on a single staff. The second staff continues the melody and includes a section labeled 'Refrain' with a tempo marking of a quarter note equal to V. The third, fourth, and fifth staves continue the melody with various note values and rests.

(20) SILENT NIGHT

♩ = 88

5

9

The musical score for 'SILENT NIGHT' consists of three staves. The first staff begins with a treble clef, a key signature of two flats, and a 6/8 time signature. A tempo marking of a quarter note equal to 88 is present. The second staff starts with a circled number '5' above the first measure and contains a 'V' marking above the fifth measure. The third staff starts with a circled number '9' above the first measure. The melody is written on a single staff.

