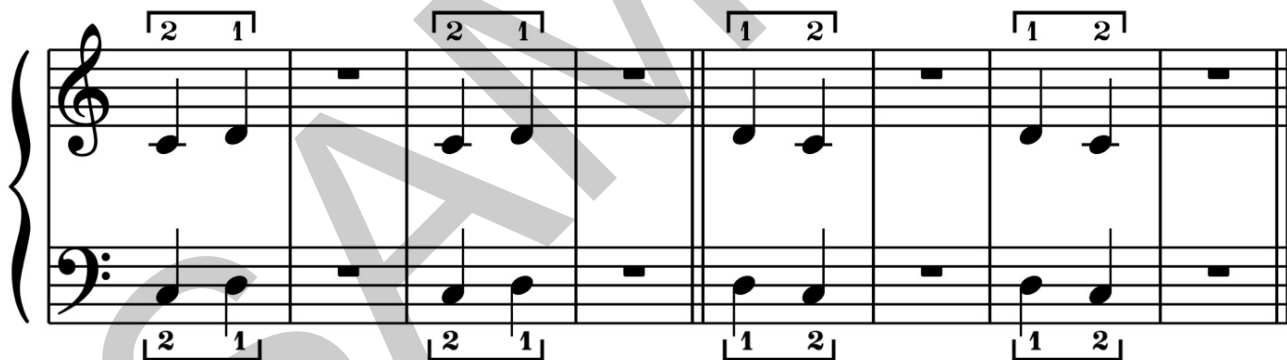


# LESSON ONE



The *placement bracket* is a symbol that shows us which fingers to place on the strings at the same time. Think of the placement bracket as an umbrella over the notes we want to play. All the notes under the umbrella get placed on the strings. Practice the following exercise first with the right hand alone, then the left hand alone, and finally with hands together. Make sure to place both the 2 and 1 finger before you start to play.



## *Teaching Tip*

Use rhythmic gestures to count the rests after each placement. Have the student raise up on beat 1 and down on beat 2 following each placement (say the finger numbers while they play followed by, “up, down”).

Also watch that the student articulates the 2 finger into the palm and the 1 finger down on top of the second knuckle of the 2 finger.